

Salt Fiber

Floor And Apartment Numbering

Floor Definition

Ground floor:

Floor where the main entrance and house number are located, or the letterboxes and/or apartment bells.

If the main entrance is located between two residential floors with the same number of steps or more steps down than up, the following rule applies:

- Lower floor = basement
- Upper floor = ground floor

Floor Number

Consecutive ascending numbering (00-89). One-digit floor numbers are preceded by a zero.

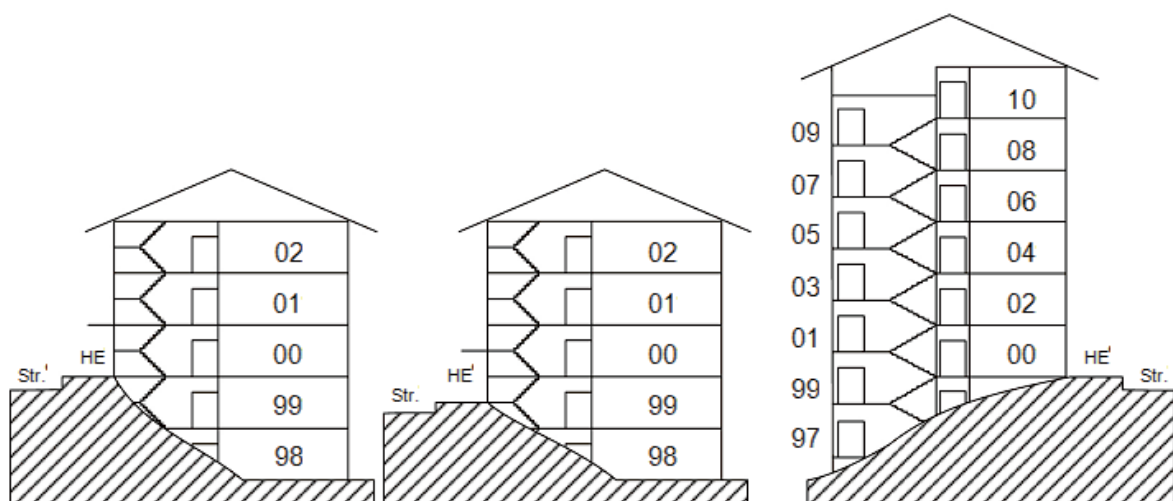
Example:

- Ground floor = 00

In order to avoid using negative numbers in the basement, descending numbering is used (99-90).

Examples:

- First basement = 99
- Second basement = 98
etc.



Legend:

Str.: Street

HE: Main entrance

Apartment Number

Two-digit numbering (01-99). Single apartment numbers are preceded by a zero.

The apartments are numbered clockwise from the entrance.

Please note: The apartment number assigned by your property management may not meet the above allocation criteria. For the fibre optic connection, only the numbering described above is significant.

Please refer to the following examples to determine your apartment number:

